

公司通訊

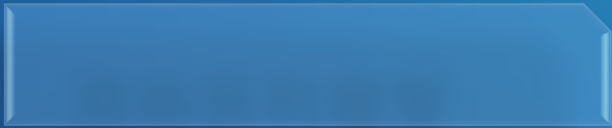
二零二三年第三期

9

: (852) 3970 2226

: (852) 3102 0210

01



CBD

CBD

33.4

2022 12

285

11

8

8.5

2

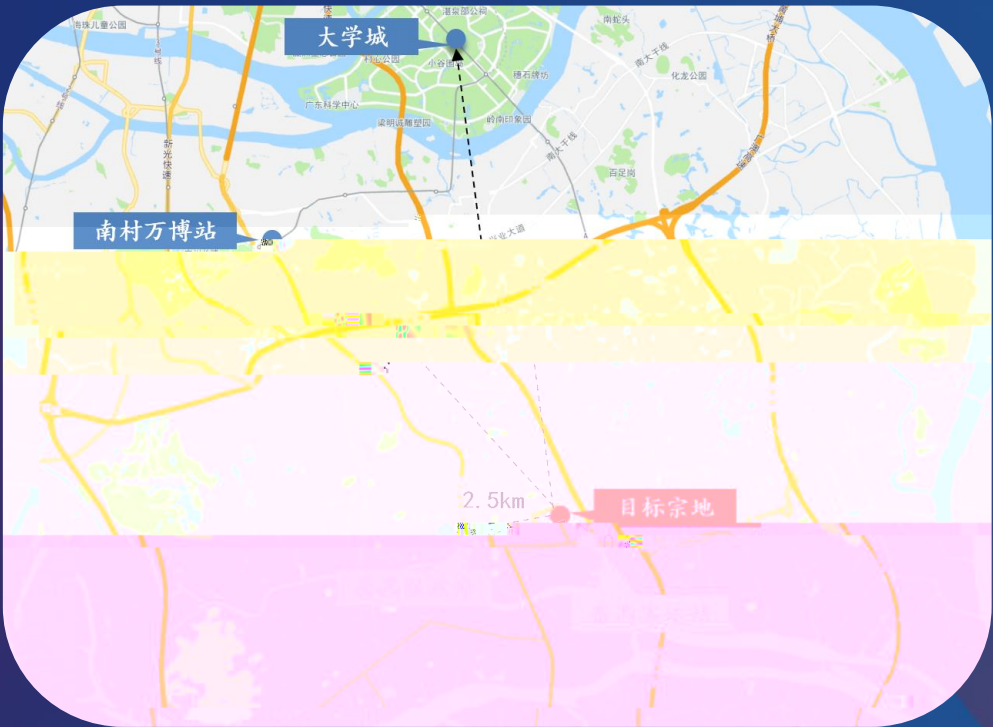


03

		15	76%
		30	78%
		48	60%
		135	65%
		56	58%
		63	77%
		69	77%
		28	63%



04



2.5

3

800

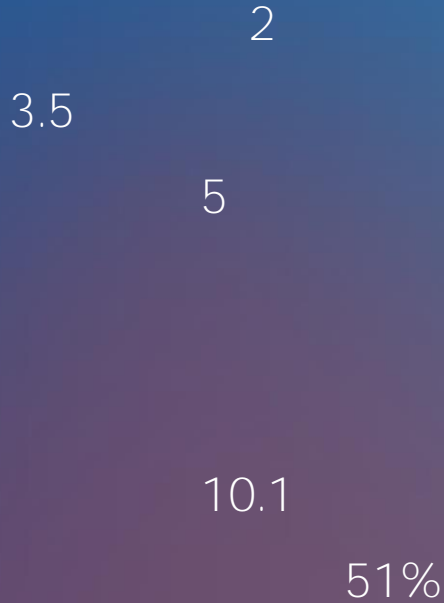
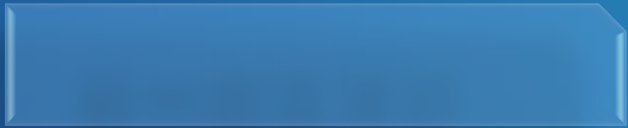
8.1

100%



5

04



04



12

18

200

4.9

100%

04

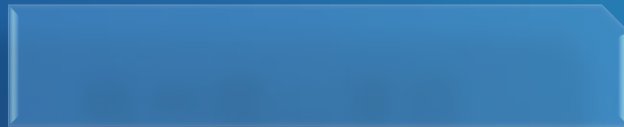
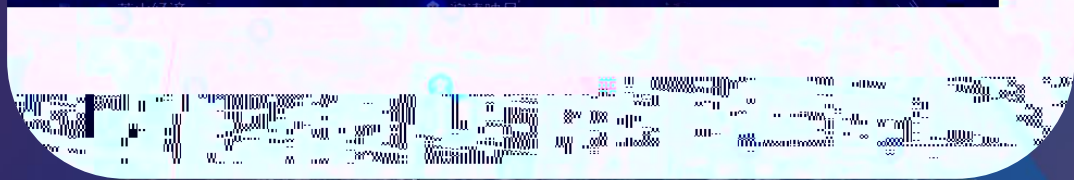
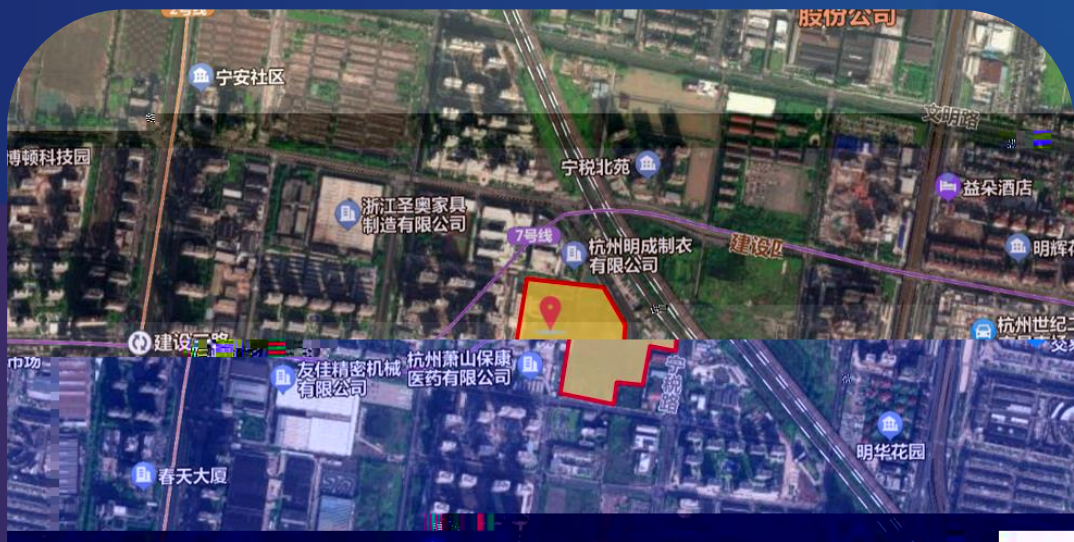


28.3

100%



04



2 7

20.1

30%

05

	111	100%		40	100%		209	100%		227	100%
	101	100%		88	100%		1,858	50%		230	100%
	86	100%		132	100%		183	51%		244	100%
	107	100%		71	100%		171	51%		168	100%
青浦項目	604	51%		185	100%		251	100%		83	25%
上海楊浦項目	49	100%		234	100%		138	51%		86	60%
	221	49%		91	100%	2010	270	100%		212	75%
	194	49%		304	50%		215	51%		414	100%
	270	32%	蕭山項目	201	30%		298	100%		151	100%
	356	51%		312	100%		2,105	35%		140	80%
	134	100%		67	100%		12	100%	保利瓏譽	334	100%
	227	51%		367	75%		551	100%		184	51%
	120	41%		59	38%		344	100%		118	51%
	104	100%		201	94%		163	51%		139	30%
	161	20%		71	40%	秀峰	283	100%		168	60%
	101	100%		217	100%		499	90%	1	446	100%
	82	49%		119	100%		87	51%		43	70%
	152	36%	番禺項目	81	100%		665	68%		102	35%
蘇州園區項目	101	51%		108	100%		286	55%	合計	18,302	